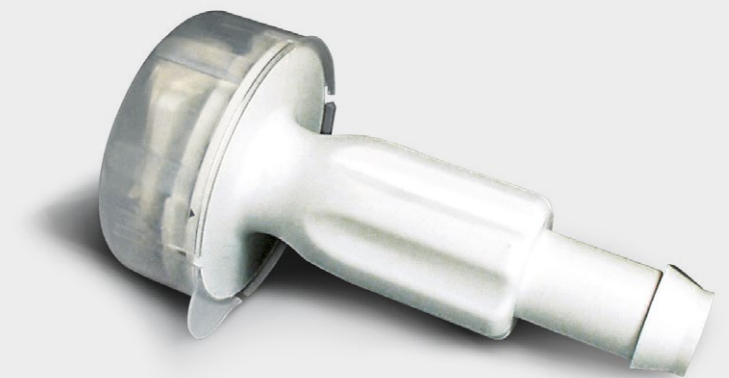


Opta[®] SFT

Fluid Management Technology

Sterile Connector to be integrated into Sartorius Fluid Management assemblies (Opta[®] SFT-I) and also available as individual device for end-user assembly with silicone tubing (SFT-I) or TPE tubing (SFT-D) and autoclave sterilization.



Description

The Opta[®] SFT Sterile Connector is a single-use device that allows a sterile connection between two separate, pre-sterilized components in biopharmaceutical manufacturing processes. Opta[®] SFT Sterile Connectors are quick and easy to use, and are backed by extensive validation work and 100% in-house integrity testing.

The Opta[®] SFT-D is available as an individual device for end-user assembly with TPE tubing and autoclave sterilization.

Ultra Safe Hose Barb Design

The dimensions of Opta® SFT-I hose barbs have been specifically designed to assure the robustness and the integrity of the engagement between hose barb and various types of tubing. This is a key requirement for sterile fluid transfer in critical biopharmaceutical applications. Special tools in manufacturing guarantee the proper attachment to any type of tubing. Thus the Opta® SFT-I Sterile Connector is supplied with Flexel® 3D and Flexboy® bags as part of integrated Sartorius Fluid Management assemblies. The Opta® SFT-I is also available as an individual device for end-user assembly with silicone tubing and autoclave sterilization.

Ready to Autoclave or Gamma sterilised transfer sets with Opta® SFT-I are also available to ensure the counter connection to customers' process equipment.

Features and Benefits

Male and female connector couplings sealed with sterilizing grade membrane	Allows for sterile fluid transfer in non-classified and classified environments
Male and female connector couplings	Allows for "error proofing" of designs to prevent mistaken connections
Sterilizable by gamma irradiation and autoclave	Flexible implementation of hybrid single-use and multiple-use technologies
100% integrity tested	Highest security
Claimed size equivalent to tubing ID size	No flow restriction
Three-step operation	Easy, robust, repeatable operation
All hose barb connections intensively qualified (SFT-I only)	Safe and robust tubing connections
Fully integrated supply chain for Opta® SFT-I incorporating single-use assemblies from Sartorius	Streamlined supply chain, high security of supply

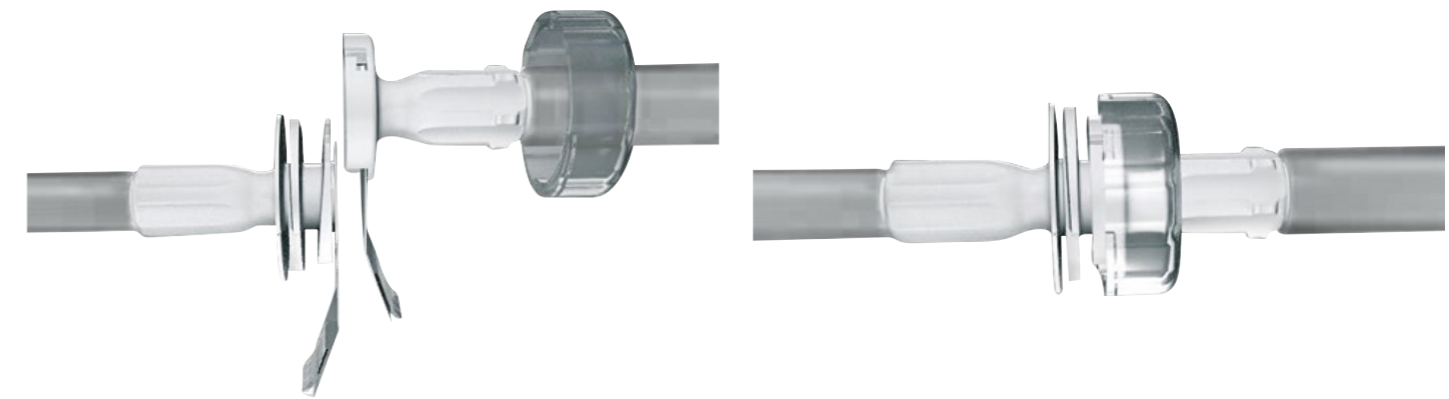
Specifications

Materials for Male and Female Coupling	
Connector body and collar:	Polycarbonate
Seal:	Santoprene
Membrane:	Hydrophobic polyethersulfone
Protective cap:	Polypropylene
Connections	
Small connector body:	¼", ⅜" and ½" hose barb
Pressure Resistance	
Max. operating pressure:	3 bar (43.5 psi) at 40 °C (104 °F)
Sterilization Methods	
Gamma irradiation:	≤ 50 kGy
Autoclaving:	20 minutes at 121 °C (250 °F)

Simple and Fast Operation Principle

The Opta® SFT Sterile Connector consists of a female and a male coupling body that, once assembled, create the sterile fluid path via an easy three-step operation. The removal of the protective plastic caps attached to each coupling prepares for assembly. After sliding the male and female coupling heads together, the sterile barrier membrane is pulled out to create the sterile fluid path. Finally, the locking collar is screwed into place. The Opta® SFT Sterile Connector is now ready for the sterile fluid transfer.

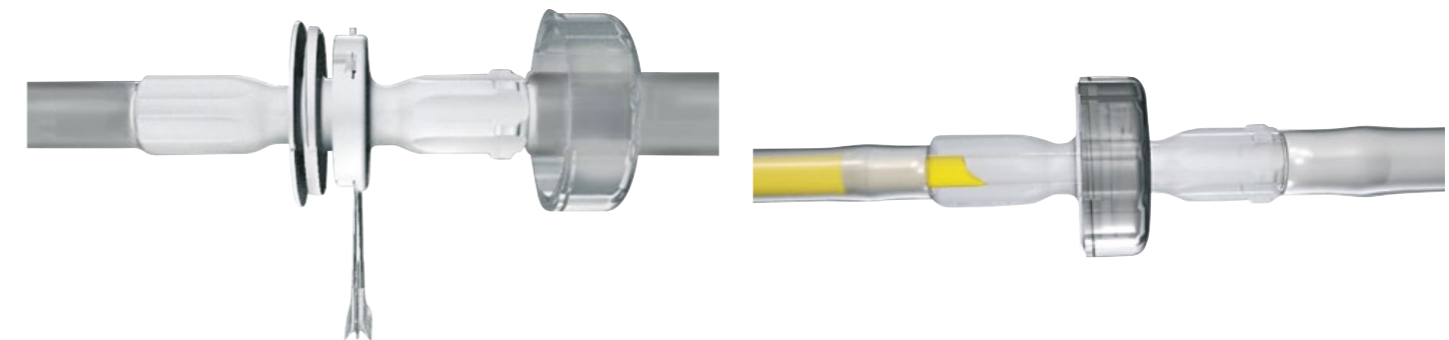
Operating Sequences



1. Remove protective cap and connect the Opta® SFT male and female connectors – correct connection validated by a click

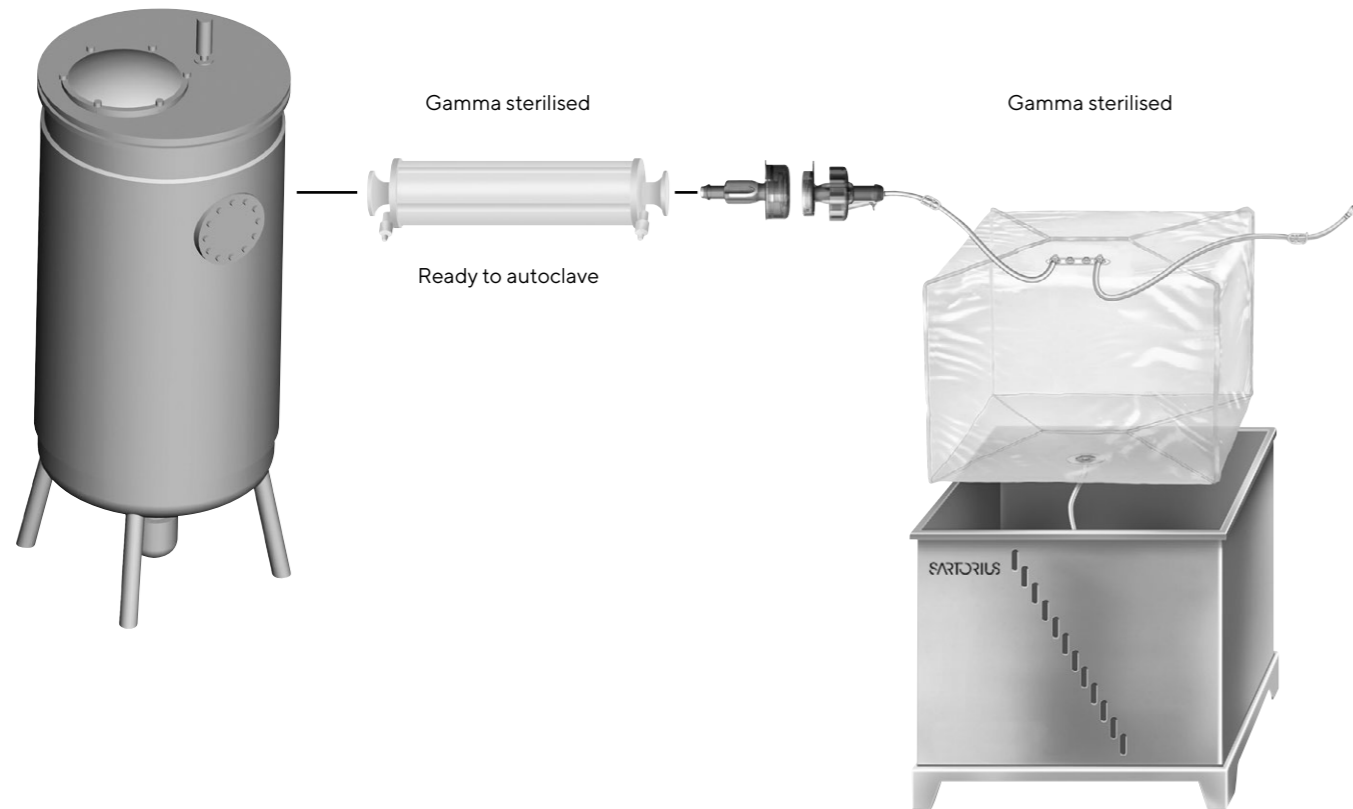
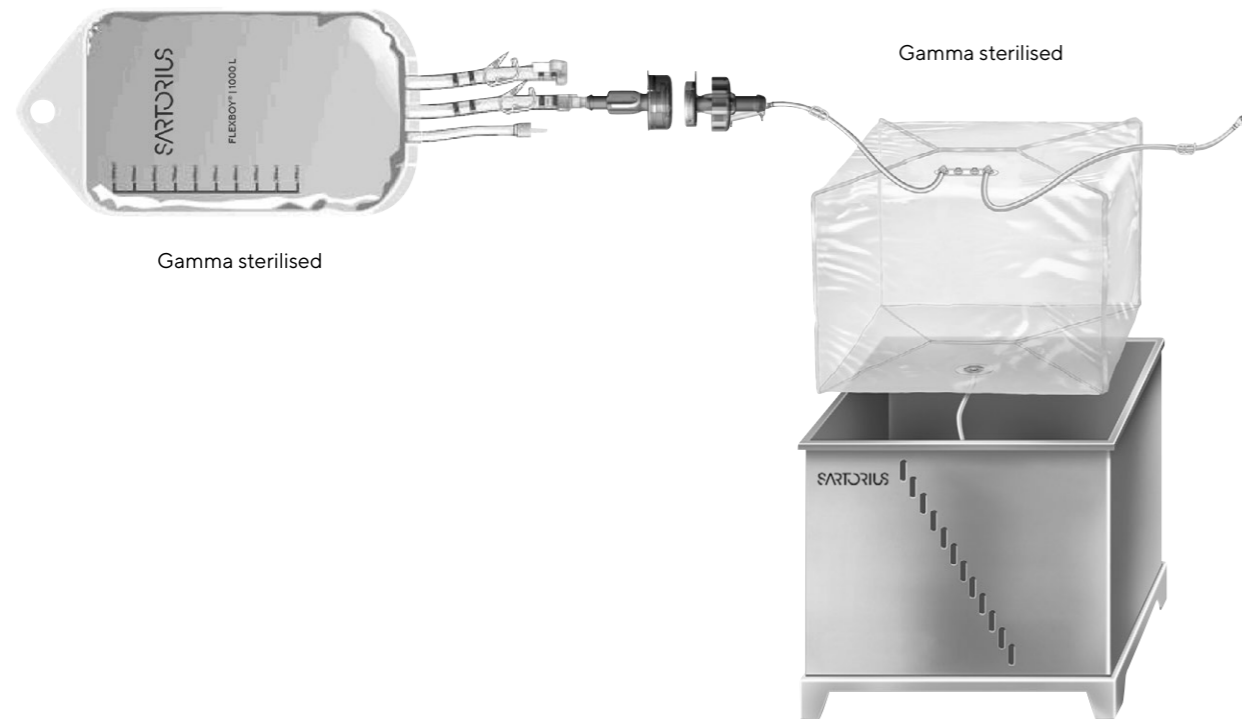


3. Screw the collar – correct screwing validated by a click



2. Remove membranes

Transfer fluid



Integration

All Opta® SFT-I connectors can be integrated into custom Sartorius assembly including a full range of additional disposable components.

Opta® SFT-I are pre-assembled to bags, filters and tubing and then gamma sterilised to offer a ready-to-use solution. They can also be assembled on tubing and filtration sets without gamma sterilisation to offer ready-to-autoclave solutions to end-users when autoclaving is required in the process.

100% Integrity Tested

All Opta® SFT Sterile Connectors are 100% integrity tested to assure the highest quality for critical applications like sterile fluid transfer.

Qualification

Opta® SFT Sterile Connectors have been qualified applying the most stringent and innovative test regimes. Biological, chemical and physical tests combined with extensive extractable testing provide users of Opta® SFT sterile connectors with data representing a variety of processing conditions. Full compliance with ISO 11137 allows for a validated claim of sterility on all Sartorius single-use products with a sterility assurance level of 10^{-6} over the shelf life.

Opta® SFT Sterile Connectors are tested for compliance to:

- USP <85>: Bacterial endotoxin testing
- USP <87>: Biological reactivity tests, in Vitro
- USP <88>: Biological reactivity tests, in Vivo
- USP <661>: Tests for plastic
- USP <645>: pH and conductivity
- USP <788> and E.P. 2.9.19: Particulate
- ISO 11737: Bioburden
- ISO 11137: Sterilization of medical devices

Details on methodologies and equipment used as well as further tests performed are available in the Validation Guide.

Sterile Fluid Transfer Validation

Opta® SFT Sterile Connectors have been validated to provide a sterile fluid transfer path under worst-case conditions. In order to provide the assurance that the Opta® SFT can provide a sterile fluid path in your process, a comprehensive validation, including immersion of the male and female connector bodies in a bacterial suspension prior to connection, followed by the transfer and subsequent incubation of growth promotion medium has been performed. Complete details of this validation are available in our validation guide.

Applications

Opta® SFT Sterile Connectors are used to create a sterile fluid path between two presterilized components in classified as well as non-classified production environments. All operations in up- and downstream processing that use single-use or hybrid equipment can benefit from the Opta® SFT Sterile Connector from Sartorius.

Quality Assurance

Sartorius Quality Systems for single-use products follow applicable ISO and FDA regulations for medical devices. Design, manufacture and sterilization processes are conducted under conditions that mirror biopharmaceutical operations and meet cGMP requirements.

Security of Supply

Sartorius has established multiple manufacturing sites with consistent industrial processes for its fully integrated disposable assemblies. The expertise of designing single-use solutions based on collaborative supplier management and customer demand planning assures a state-of-the-art and robust supply chain that can cope with strong market growth.

Ordering Information

Part number to be specified in FMT assembly specifications	Description
64OMS014M	Opta® SFT-I Sterile Connector, ¼" Hose Barb, Male Small Connector Body
64OFS014M	Opta® SFT-I Sterile Connector, ¼" Hose Barb, Female Small Connector Body
64OMS038M	Opta® SFT-I Sterile Connector, ⅜" Hose Barb, Male Small Connector Body
64OFS038M	Opta® SFT-I Sterile Connector, ⅜" Hose Barb, Female Small Connector Body
64OMS012M	Opta® SFT-I Sterile Connector, ½" Hose Barb, Male Small Connector Body
64OFS012M	Opta® SFT-I Sterile Connector, ½" Hose Barb, Female Small Connector Body
64OML034M	Opta® SFT-I Sterile Connector, ¾" Hose Barb, Male Large Connector Body
64OFL034M	Opta® SFT-I Sterile Connector, ¾" Hose Barb, Female Large Connector Body

Product code	Description	Pack size
64OMS014M---D	Opta® SFT-I Sterile Connector, ¼" Hose Barb, Male Small Connector Body, For assembly with silicone tubing	10
64OFS014M---D	Opta® SFT-I Sterile Connector, ¼" Hose Barb, Female Small Connector Body, For assembly with silicone tubing	10
64OMS038M---D	Opta® SFT-I Sterile Connector, ⅜" Hose Barb, Male Small Connector Body, For assembly with silicone tubing	10
64OFS038M---D	Opta® SFT-I Sterile Connector, ⅜" Hose Barb, Female Small Connector Body, For assembly with silicone tubing	10
64OMS012M---D	Opta® SFT-I Sterile Connector, ½" Hose Barb, Male Small Connector Body, For assembly with silicone tubing	10
64OFS012M---D	Opta® SFT-I Sterile Connector, ½" Hose Barb, Female Small Connector Body, For assembly with silicone tubing	10
64OML034M---D	Opta® SFT-I Sterile Connector, ¾" Hose Barb, Male Large Connector Body, For assembly with silicone tubing	10
64OFL034M---D	Opta® SFT-I Sterile Connector, ¾" Hose Barb, Female Large Connector Body, For assembly with silicone tubing	10
64OML034B---D	Opta® SFT-I Sterile Connector, ¾" Hose Barb, Male Large Connector Body, For assembly with silicone tubing	10

Product code	Description	Pack size
641MS014M---D	Opta® SFT-D Sterile Connector, Male Small Connector Body, ¼" Hose Barb For assembly with TPE tubing	10
641FS014M---D	Opta® SFT-D Sterile Connector, Female Small Connector Body, ¼" Hose Barb For assembly with TPE tubing	10
641MS038M---D	Opta® SFT-D Sterile Connector, Male Small Connector Body, ⅜" Hose Barb For assembly with TPE tubing	10
641FS038M---D	Opta® SFT-D Sterile Connector, Female Small Connector Body, ⅜" Hose Barb For assembly with TPE tubing	10
641MS012M---D	Opta® SFT-D Sterile Connector, Male Small Connector Body, ½" Hose Barb For assembly with TPE tubing	10
641FS012M---D	Opta® SFT-D Sterile Connector, Female Small Connector Body, ½" Hose Barb For assembly with TPE tubing	10

Germany

Sartorius Stedim Biotech GmbH

August-Spindler-Strasse 11

37079 Goettingen

Phone +49 551 308 0

USA

Sartorius Stedim North America Inc.

565 Johnson Avenue

Bohemia, NY 11716

Toll-Free +1 800 368 7178



For further contacts, visit

www.sartorius.com

Specifications subject to change without notice.

© 2021 Sartorius Stedim FMT S.A.S., Avenue de Jouques - Zone Industrielle Les Paluds - C.S. 91051, 13781 Aubagne Cedex, France

Publication No.: SLO2000-e | Order No.: 85032-535-04

Status: 10 | 2023