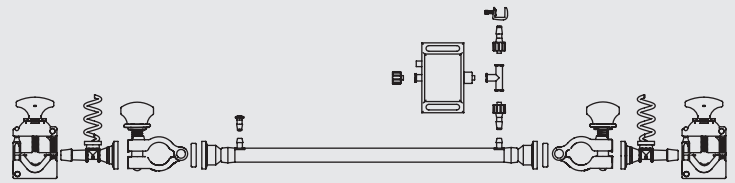


Sartorius Hollow Fiber TFF Flow Connector Kit | Explorer

Hardware Selected to Connect Your Specific Sartorius Hollow Fiber TFF Module to a Crossflow Assembly



Executive Summary

Hollow Fiber TFF Flow Connector Kit | Explorer connects your Hollow Fiber TFF Module | Explorer to your assembly tubing. The kit comes with PendoTECH pressure sensors that enable monitoring of transmembrane pressure (TMP).

Unique Selling Points

Hardware selected to connect your Hollow Fiber TFF Module | Explorer to a crossflow assembly. The kits include, as needed:

- Clamps
- Pinch valves
- Reducers
- Silicone gaskets
- Plugs
- Single-use pressure sensors to enable monitoring of transmembrane pressure (TMP)

Relevant Applications

Sartorius Hollow Fiber TFF Modules are designed for biopharmaceutical processing. They can be used for the following applications:

Upstream

- Cell harvest
- Cell or lysate clarification

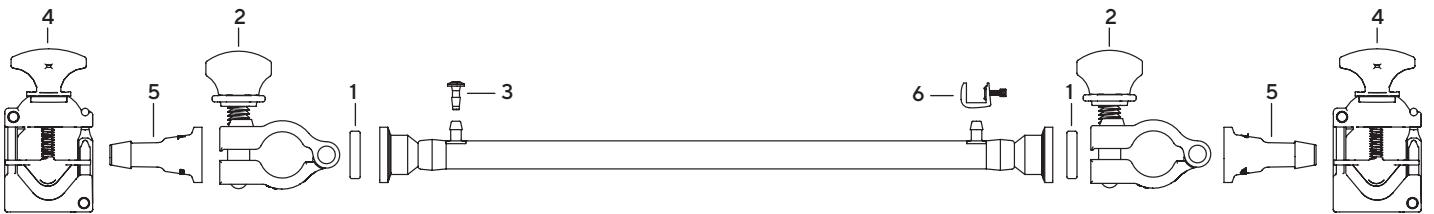
Downstream

- Concentration
- Diafiltration

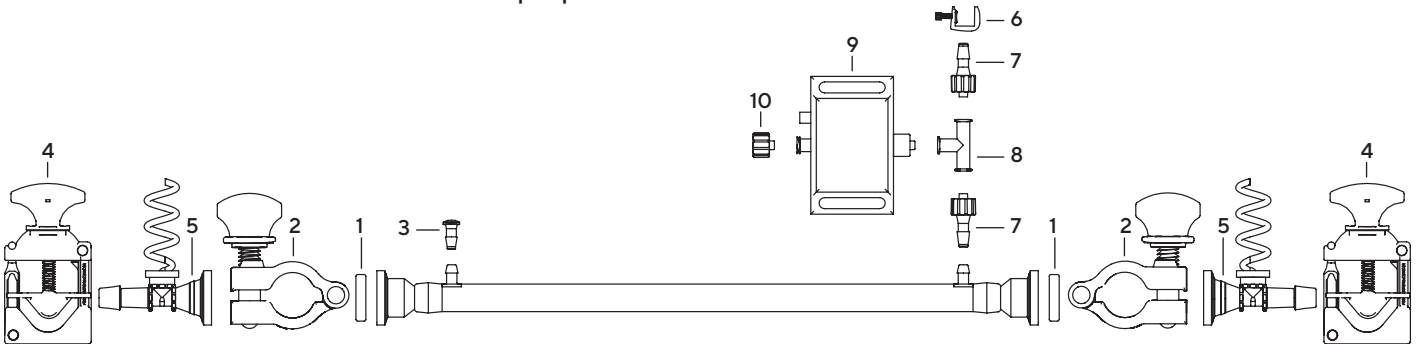
Technical Specifications

Attribute	Item	Material
In fluid contact	Gaskets	Platinum-cured silicone
In fluid contact	Reducers	Polypropylene AF
In fluid contact	Sensors	Polysulfone
Not in fluid contact	Pinch Valves	Glass Reinforced White Nylon
Not in fluid contact	Clamps	Glass Reinforced White Nylon

Sartorius Hollow Fiber Flow Connector Kit | Explorer Without Sensors



Sartorius Hollow Fiber Flow Connector Kit | Explorer With Sensors



Specification	Item Number	Description	Use	Quantity
Without Sensors	1	0.75 inch TC Silicone Gaskets	For Retentate Feed	2
	2	0.75 inch TC White Plastic Clamps	For Retentate Feed	2
	3	Press in Plugs, 0.1875 inch Barb	For Retentate Feed	1
	4	0.375 inch Pinch Valve	For Retentate Feed	2
	5	0.75 inch TC × 0.375 inch Barb (Reducers)	For Retentate Feed	2
	6	Pinch Valve for 0.09375 inch to 0.75 inch Tube OD	For Permeate	1
With Sensors	1	0.75 inch Silicone Gaskets	For Retentate Feed	2
	2	0.75 inch TC Clamps	For Retentate Feed	2
	3	Press in Plug, Barb	For Permeate	1
	4	0.375 inch Pinch Valve	For Retentate Feed	2
	5	Single Use Pressure Sensor 0.75 inch TC to 0.375 inch Barb	For Retentate Feed	1
	6	Pinch Valve for 0.375 inch to 0.25 inch Tube OD	For Permeate	1
	7	Luer × 0.1563 Barb (Reducers)	For Permeate	2
	8	TEE-Female Luer	For Permeate	1
	9	Single Use Pressure Sensor Luer	For Permeate	1
	10	Male Luer Lock Ring Plugs	For Permeate	1

Note

May use retentate Pinch Valve to generate back pressure during operation of Hollow Fiber TFF Module.

Caution

Do not operate Hollow Fiber TFF Module without pressure monitoring capabilities.

Recommendation

Contact Pressure Sensor manufacturer, PendoTECH, for pressure monitor requirements.

Ordering Information


	Single-use Line, Steamer Line, Re-use Line	
Specification	Without Sensors	With Sensors
Order Code	FCEXPKIT-00001	FCEXPKIT-SEN01

Germany

Sartorius Stedim Biotech GmbH
August-Spindler-Strasse 11
37079 Goettingen
Phone +49 551 308 0

USA

Sartorius Stedim North America Inc.
565 Johnson Avenue
Bohemia, NY 11716
Toll-Free +1 800 368 7178

 For further contacts, visit
www.sartorius.com

Specifications subject to change without notice.

© 2022 Copyright Sartorius Stedim Biotech GmbH, August-Spindler-Strasse 11, 37079 Goettingen, Germany

DIR: 2765208-000-01 | Status: 11 | 21 | 2022